



AMPHIBIOUS TOOL CARRIER



TRUXOR

Australia



DISTRIBUTED IN AUSTRALIA BY:
Australian Catchment Management Pty Ltd

*SPECIALISTS IN: Aquatic Weed Harvesting • Aquatic Rubbish Removal
Noxious Weed Control • Aquatic Herbicide Application
Aquatic & Grounds Maintenance • Dredging & Silt Removal*

www.truxor.com.au



TRUXOR T50



Truxor amphibious machines - since 1994

Our long experience of technology and product development as well as our close contact with customers and retailers around the world form the basis of the new generation of our Truxor machines. The T-series has been updated with several new features:

- Lightweight chassis in high-tensile steel
- Lifting arm with parallel movement
- Quick bracket X4
- LED work lights
- Digital screen
- Digital technology that improves machine performance and facilitates service

The digital screen provides information from the engine and other systems. Digital troubleshooting facilitates service and maintenance. The digital screen also makes it possible to adjust some of the machine's functions, such as drive band balance and speed, flow adjustment of hydraulic outlets, emergency operation etc.

Hydraulic system with thermostat

A modern hydraulic system increases the performance when the hydraulic oil temperature exceeds 40 degrees. To achieve optimum temperature, there is a thermostat controlling the minimum temperature. The right hydraulic oil temperature improves performance and ensures better operating economy.



T50 - the most powerful Truxor for power-demanding tools

The Truxor T50 is the most powerful machine in the T-Series, quipped with a 50 hp diesel engine that meets the highest environmental class standards EU Stage V and EPA Tier 4.

The powerful engine and a new hydraulic system guarantees the highest levels of performance and operational reliability for your job. Truxor T50 easily operates in demanding environments with power-demanding tools.

Already at 1400 rpm, the machine has a high performance. The ability to work with the machine at low rpm reduces both fuel consumption and noise level.



<p>MOTOR: Hatz 3H 50 TICD dieselmotor Common Rail 37 kW 50 hp, Intercooler, Can-bus system, EU Stage V and EPA Tier 4 final certified, 2,400 rpm. Diesel Particulate Filter (DPF).Max torque 185 Nm</p> <p>FUEL TANK: 35 l</p> <p>COOLING SYSTEM: Combined engine/hydraulic/intercooler system. The air intake of the radiator is equipped with a filter (prevent dirt from entering the radiator cells). Thermostat controls the hydraulic oil temperature, improving machine performance.</p> <p>ELECTRIC SYSTEM: 12V/150 Amp, 60 ah battery. Automatic stop function if the engine overheats or the oil pressure is too low. Warning system for driving at maximum slope. 4 LED work lights.</p>	<p>RIGHT JOYSTICK: Lifting, tilting, move cabin forward and rear (weight distribution), control of hydraulic outlet 3 and hydraulic outlet 4.</p> <p>Hydraulic outlet 1 (front): Working pressure 140 bar. adjustable flow 0-20 l/min</p> <p>Hydraulic outlet 2 (front): Working pressure 130 bar. adjustable flow 0-11 l/min</p> <p>Hydraulic outlet 3 (front): Working pressure 200 bar. Adjustable flow 0-60 l/min</p> <p>Hydraulic outlet 3 (rear): Working pressure 200 bar. Adjustable flow 0-60 l/min</p> <p>Hydraulic outlet 4 (rear): Working pressure 130 bar. Adjustable flow 0-11 l/min.</p>
<p>HYDRAULIC SYSTEM: Hydraulic pump with variable displacement (Load sensing controlled), 65 cm³/r. Hydraulic power: 26 kW/35hk.</p> <p>Hydraulic tank: 19 l, system 35 l. Cyclone technology forced ventilation. Environmentally friendly system with automatic stop of the engine if the oil level drops by more than 8 litres. (Minimises oil spills) Hydraulic valve: 9 functions.</p> <p>Control system: CAN bus based electronic control units with remote assistance.</p>	<p>DIMENSIONS: Total length max. 5030 mm, min 4700 mm. Total width 2080 mm. Total height max 2600, min 2020 mm. Set weight : 1470 kg</p> <p>DRIVING SPEED: 0-100 m/min</p> <p>FRONT LIFT: Lifting power 400 kg, X4 bracket for fast change of tools. Semi-automatic locking of tools.</p>
<p>DRIVERS SEAT: Ergonomically adjustable driver's seat with thermostatically controlled electric heated seat. Folding cab. Adjustable controls.</p>	<p>MATERIAL: Drive band (paddle track) of rubber. Paddles and slide rails in strong plastic. Pontoons manufactured of saltwater-resistant aluminium. Heat galvanised steel structure.</p>
<p>DASHBOARD: Digital high resolution display for speed, engine temperature, oil pressure engine, timer, fuel gauge, hydraulic oil temperature, hydraulic pressure, hydraulic flow, emergency operation, on board diagnostics, clock etc.</p>	<p>ITEM NO: 94-T50</p> <p>WARRANTY TERMS: 24 months or 1000 hours of operation</p>
<p>LEFT JOYSTICK: Driving forward/backward/right/left. Speed is controlled by a joystick and with precision driving controls. Control for hydraulic outlet 1, hydraulic outlet 2.</p>	<p>OPTIONS: Hydraulic oil environmentally friendly. Panolin replaces standard hydraulic oil. 36 litre Item no: 94-T50E</p>

The engine is equipped with a diesel oxidation catalyst system and requires the following fuel specifications :

Europe: EN 590

UK: BS 2869 A1 / A2

USA: ASTM D 975-09a 1-D S15 or 2-D S15

Japan: JIS K 2204

The use of fuel that does not meet the specifications can lead to engine damage.

Truxor T50 can be equipped with engine options suitable for lower quality diesel fuel. For further information, please contact Dorotea Mekaniska AB.

Doro pump



Doro cutter D30



Doro digger



Thanks to its high performance, the T50 is the excellent tool carrier for power demanding tools, such as the Doro pumps. All tools and accessories are compatible with the Truxor T50. Technical information is available at the website: www.doroteamekaniska.se



Doro cutter ESM 20



Doro cutter ESM 30



Reed rake



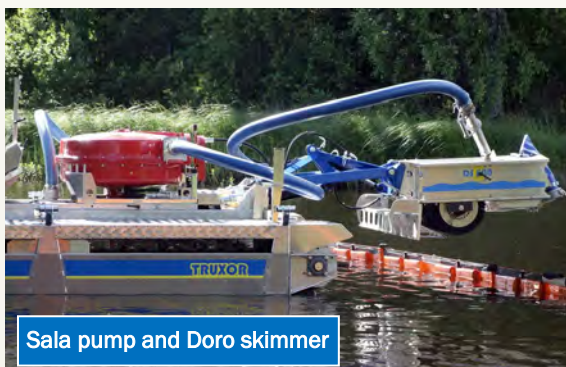
Doro cutter D20



Doro grip - Grip bucket



Doro cutter ESM 50



Sala pump and Doro skimmer



Doro grip - Grip rake



Dorotea Mekaniska AB are specialised in machines for lake cleaning, maintenance of wetlands and waterways. Since 1990 we have been delivering, manufacturing and developing products, turning innovative thinking into reality. We offer everything from the small and simple reed cutter to the professional machine for reed cutting, dredging, oil spill clean-up, digging, piling etc.

The Dorotea factory, located in the north of Sweden, is the centre of production, spare parts and sales. We have customers and distributors all over the world. Spare parts for our products can be obtained from us or from our major distributors.



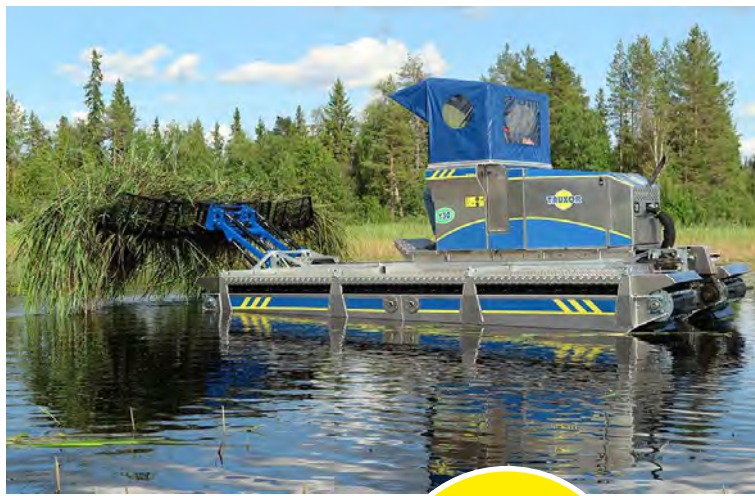
www.doroteamekaniska.se

The manufacturer reserves the right to make changes to the technical specifications and product range.



Östra Polarvägen 10
917 32 Dorotea, Sweden
+46 (0)942-25880
www.doroteamekaniska.se
info@doroteamekaniska.se

RETAILER:
Australian Catchment Management Pty Ltd
PO Box 79, Windsor NSW 2756
Phone: (02) 45 TRUXOR | Mobile: 0410 535 053
www.australiacatchmentmanagement.com.au
Email: acmsales@optusnet.com.au



TRUXOR T-series





TRUXOR T-series

25 years with Truxor

2019 marks 25 years since the first Truxor machine was launched on the market. Since the start in 1994, a lot has happened in the development of the machines. Our long experience of technology and product development as well as our close contact with customers and retailers around the world form the basis of the new generation of Truxor machines. The new T-series has been updated with several new features:

- **Lightweight chassis in high-tensile steel**
- **Lifting arm with parallel movement**
- **Quick bracket X4**
- **LED work lights**
- **Digital screen**
- **Digital technology that improves machine performance and facilitates service**

The digital screen provides information from the engine and other systems. Digital troubleshooting facilitates service and maintenance.

The digital screen also makes it possible to adjust some of the machine's functions, such as drive band balance and speed, flow adjustment of hydraulic outlets, emergency operation etc.

Hydraulic system with thermostat

A modern hydraulic system increases the performance when the hydraulic oil temperature exceeds 40 degrees. To achieve optimum temperature, there is a thermostat controlling the minimum temperature. The right hydraulic oil temperature improves performance and ensures better operating economy.

The T-series presents machines with different type of engines, adapted to serve the environmental requirements and conditions on a world market.



Ergonomic operator's environment with digital screen.





Lifting arm with parallel movement. Semi-automatic quick bracket X4 for fast tool replacement.



Lockable retractable storage.



Easily accessible engine compartment facilitates service.



The movable driver's cab is hydraulically adjusted and works as counterweight during heavy lifts in water.



The weight distribution system gives low ground pressure and floating capacity to the machine, offering unique opportunities for work in sensitive environments.



TRUXOR T20

Truxor T20 is built with a 24.8 hp engine. Truxor T20 fulfils the latest environmental requirements. The model is ideal for weed cutting and collection of water plants and is equipped with one hydraulic outlet for running the cutter tool. The capacity of the Truxor is well suited for weed harvesting. For tools that require more power, we recommend machines from the T-series with higher capacity.

Technical specifications Truxor T20	
MOTOR: DIESEL Kubota D1305 E4B-EU EPA/CARB Tier 4 + EU Stage V, 3 cylinders, 18.5 kW/24.8 hp at 2,600 rpm. Max torque 80.0 Nm at 1700 rpm. FUEL TANK: 35 l	RIGHT JOYSTICK: lifting, tilting, weight distribution.
COOLING SYSTEM: Combined engine/hydraulic system. The air intake of the radiator is equipped with a filter (prevents dirt in the radiator cells). Thermostat controls the hydraulic oil temperature, improving machine performance.	DASHBOARD: Digital screen for speed, engine temperature, oil pressure engine, timer, fuel gauge, hydraulic oil temperature, hydraulic pressure, hydraulic flow, emergency operation, clock etc.
ELECTRIC SYSTEM: 12V/40 Amp, 45 ah battery. Automatic stop function if the engine overheats or the oil pressure is too low. Warning system for driving at maximum slope. 4 LED work lights.	DIMENSIONS: Total length max. 5030 mm, min 4700 mm, Total width 2080 mm. Total height max 2600, min 2020 mm. Set weight T20: 1350 kg.
HYDRAULIC SYSTEM: Hydraulic pump with variable displacement (LS). Hydraulic pump: Maximum system flow 45 cm ³ /r 120 l/min. Hydraulic power: 14.1 hp. Hydraulic tank: 19 l, system 33 l. Cyclone technology forced ventilation. Environmentally friendly system with automatic stop of the engine if the oil level drops by more than 8 litres. (Minimises oil spills). Hydraulic-operated valve: 6 functions. Control system: CAN bus control of all valves.	DRIVING SPEED: 0-100 m/min FRONT LIFT: Lifting power 350 kg, X4 bracket for fast change of tools. Semi-automatic locking of tools. MATERIAL: Drive band: (paddle track) of rubber. Paddles and slide rails in strong plastic. pontoons manufactured of saltwater-resistant aluminium. Heat galvanised steel structure.
DRIVERS SEAT: Ergonomically adjustable driver's seat with thermostatically controlled electric heated seat. Folding cab. Adjustable controls.	ITEM NO: 94-T20 GUARANTEE: 24 months or 1000 hours of operation.
LEFT JOYSTICK: Driving forward/backward/right/left. Speed is controlled by a joystick and with precision driving controls. Control for hydraulic outlet 1.	OPTIONS: Hydraulic oil environmentally friendly. Panolin replaces standard hydraulic oil. T20 33 litre Item no: 94-T20E



TRUXOR T30

Truxor T30 is optimized with the latest environmental requirements and a petrol engine from Kubota. The engine offers high torque at low engine speeds. With low engine speeds, fuel consumption becomes lower. Comes with five hydraulic outlets. The powerful engine makes T30 suitable for work with all tools in our range.

Technical specifications Truxor T30

MOTOR: PETROL Kubota WG1605-G-E3 EPA Tier2/CARB Tier 3 + EU Stage V 33 kW/44 hp at 2,600 rpm. Max torque 118.0 Nm at 2400 rpm. **FUEL TANK:** 35 l

COOLING SYSTEM: Combined engine/hydraulic system. The air intake of the radiator is equipped with a filter (prevents dirt in the radiator cells). Thermostat controls the hydraulic oil temperature, improving machine performance.

ELECTRIC SYSTEM: 12V/60 Amp, 45 ah battery. Automatic stop function if the engine overheats or the oil pressure is too low. Warning system for driving at maximum slope. 4 LED work lights.

HYDRAULIC SYSTEM: Hydraulic pump with variable displacement (LS). **Hydraulic pump:** Maximum system flow 60 cm³/r 165 l/min. Hydraulic power: 22.2 hp. **Hydraulic tank:** 19 l, system 35 l. Cyclone technology forced ventilation. Environmentally friendly system with automatic stop of the engine if the oil level drops by more than 8 litres. (Minimises oil spills) **Hydraulic-operated valve:** 9 functions. **Control system:** CAN bus control of all valves.

DRIVERS SEAT: Ergonomically adjustable driver's seat with thermostatically controlled electric heated seat. Folding cab. Adjustable controls.

DASHBOARD: Digital screen for speed, engine temperature, oil pressure engine, timer, fuel gauge, hydraulic oil temperature, hydraulic pressure, hydraulic flow, emergency operation, clock etc.

LEFT JOYSTICK: Driving forward/backward/right/left. Speed is controlled by a joystick and with precision driving controls. Control for hydraulic outlet 1, hydraulic outlet 2.

RIGHT JOYSTICK: lifting, tilting, weight distribution, control of hydraulic outlet 3.

Hydraulic outlet 1 (front): Working pressure 140 bar, adjustable flow 0-20 l/min

Hydraulic outlet 2 (front): Working pressure 130 bar, adjustable flow 0-11 l/min

Hydraulic outlet 3 (front): Working pressure 200 bar. Adjustable flow 0-60 l/min

Hydraulic outlet 3 (rear): Working pressure 200 bar. Adjustable flow 0-60 l/min

Hydraulic outlet 4 (rear): Working pressure 130 bar. Adjustable flow 0-11 l/min.

DIMENSIONS: Total length max. 5030 mm, min 4700 mm. Total width 2080 mm. Total height max 2600, min 2020 mm. Set weight T30: 1370 kg

DRIVING SPEED: 0-100 m/min

FRONT LIFT: Lifting power 350 kg, X4 bracket for fast change of tools. Semi-automatic locking of tools.

MATERIAL: Drive band: (paddle track) of rubber. Paddles and slide rails in strong plastic. Pontoons manufactured of saltwater-resistant aluminium. Heat galvanised steel structure.

ITEM NO: 94-T30

GUARANTEE: 24 months or 1000 hours of operation

OPTIONS: Hydraulic oil environmentally friendly. Panolin replaces standard hydraulic oil. T30 35 litre **Item no:** 94-T30E



TRUXOR T40

Truxor T40 is suitable for work with all the tools in our product range. The powerful engine and hydraulic outlet make it appropriate for work with power-demanding tools, such as dredge pump and flail mulcher, etc. Truxor T40 is delivered with a strong 45 hp turbo-charged engine. Supplied with five hydraulic outlets.

Technical specifications Truxor T40	
<p>MOTOR: DIESEL V1505-T-E3B EPA/CARB interim Tier 4 + EU Stage IIIA. 4 cylinders, 33 kW/44.2 hp at 2600 rpm. Max torque 118.0 Nm at 2000 rpm. FUEL TANK: 35 l</p> <p>COOLING SYSTEM: Combined engine/hydraulic system. The air intake of the radiator is equipped with a filter (prevents dirt in the radiator cells). Thermostat controls the hydraulic oil temperature, improving machine performance.</p> <p>ELECTRIC SYSTEM: 12V/60 Amp, 45 ah battery. Automatic stop function if the engine overheats or the oil pressure is too low. Warning system for driving at maximum slope. 4 LED work lights.</p>	<p>RIGHT JOYSTICK: lifting, tilting, weight distribution, control of hydraulic outlet 3</p> <p>Hydraulic outlet 1 (front): Working pressure 140 bar, adjustable flow 0-20 l/min</p> <p>Hydraulic outlet 2 (front): Working pressure 130 bar, adjustable flow 0-11 l/min</p> <p>Hydraulic outlet 3 (front): Working pressure 200 bar. Adjustable flow 0-60 l/min</p> <p>Hydraulic outlet 3 (rear): Working pressure 200 bar. Adjustable flow 0-60 l/min</p> <p>Hydraulic outlet 4 (rear): Working pressure 130 bar. Adjustable flow 0-11 l/min.</p>
<p>HYDRAULIC SYSTEM: Hydraulic pump with variable displacement (LS). Hydraulic pump: Maximum system flow 60 cm³/r 155 l/min. Hydraulic power: 22.2 hp. Hydraulic tank: 19 l, system 35 l. Cyclone technology forced ventilation. Environmentally friendly system with automatic stop of the engine if the oil level drops by more than 8 litres. (Minimises oil spills). Hydraulic-operated valve: 9 functions. Control system: CAN bus control of all valves.</p>	<p>DIMENSIONS: Total length max. 5030 mm, min 4700 mm, Total width 2,080 mm. Total height max 2600 mm, min 2020 mm. Set weight T40: 1380 kg</p> <p>DRIVING SPEED 0-100 m/min</p> <p>FRONT LIFT: Lifting power 350 kg, X4 bracket for fast change of tools. Semi-automatic locking of tools.</p>
<p>DRIVERS SEAT: Ergonomically adjustable driver's seat with thermostatically controlled electric heated seat. Folding cab. Adjustable controls.</p>	<p>MATERIAL: Drive band: (paddle track) of rubber. Paddles and slide rails in strong plastic. Pontoon manufactured of saltwater-resistant aluminium. Heat galvanised steel structure.</p>
<p>DASHBOARD: Digital screen for speed, engine temperature, oil pressure engine, timer, fuel gauge, hydraulic oil temperature, hydraulic pressure, hydraulic flow, emergency operation, clock etc.</p>	<p>ITEM NO: 94-T40</p> <p>GUARANTEE: 24 months or 1000 hours of operation</p>
<p>LEFT JOYSTICK: Driving forward/backward/right/left. Speed is controlled by a joystick and with precision driving controls. Control for hydraulic outlet 1, hydraulic outlet 2.</p>	<p>OPTIONS: Hydraulic oil environmentally friendly. Panolin replaces standard hydraulic oil. T40 35 litre Item no: 94-T40E</p>

Cutting tools

Which cutting tool should I choose?

We offer five different cutter units for our Truxor machines. The Doro cutter D20 and D30 are recommended for water depth of more than 30 cm. For cutting operations on land use the ESM cutters. The four ESM cutters are equipped with double-action Busati knife systems which has sufficient capacity to handle heavy vegetation.

Collection – just as important as cutting

Cut water plants left in the water can act as fertiliser. This is why we recommend that all cut materials be collected and removed. Harvesting and removing water plants helps prevent eutrophication.



Doro cutter D20/D30



The Doro cutter D20 is the perfect solution for common reed cutting in most aquatic environments. The cutter is hydraulically operated and easy to attach to Truxor's tool bracket. The cutting depth is 1 m. The knives are replaceable with a working width from 2.2 to up to 4 metres.

The Doro cutter D20 and D30 must be used in water, which lubricates the knives during work and is therefore not suitable for use on land. A stone release system protects the knives if they come into contact with solid objects. The Doro cutter D30 is the same model but its cutting depth has been increased to 1.4 m. The knives of the cutter are delivered with a working width of 4 metres.

Doro cutter D20/D30

Knives (4 m) included

D20

Working width:	4 m
Weight 3090:	66 kg
Cutting depth:	1 m
Item no:	95-20300

D30

Working width:	4 m
Weight:	70 kg
Cutting depth:	1,4 m
Item no:	95-20400

Accessories:

Knife set	
2,2 m	95-70022
3 m	95-70030
4 m	95-70040



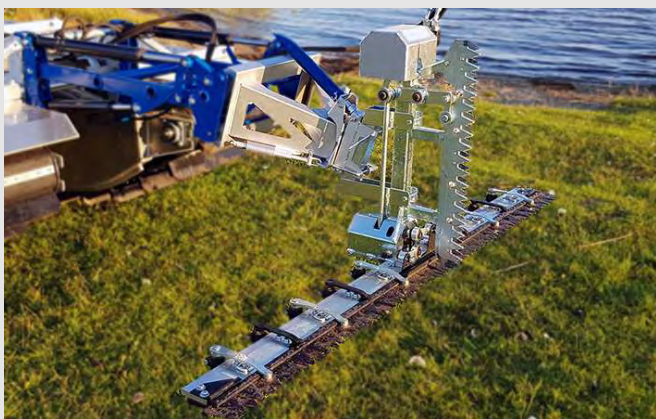


Doro Cutter D40

Doro cutter D40 is a deep cutting unit with telescopic function. The generous cutting depth of 2,1 meters enables deeper cutting, closer to the bottom. The regrowth will take more time and the intervals between cutting the vegetation can be lengthened.

Doro cutter D40 has hydraulic drift and is easily mounted in the tool bracket on Truxor. The knives are available in working widths from 2,2 to 4 meters and the cutter is delivered with 4 meter as standard. A stone release system protects the knives when they encounter solid objects.

Doro Cutter D40	
Working width:	4 m
Weight D40	97 kg
Cutting depth: (Hydraulic driven telescopic extension)	0,2-2,1 m
Item no: (incl. knife set 4 m)	84-03200
Accessories	
Knife set	Item. no:
2,2 m (2 pcs)	95-70022
3 m (2 pcs)	95-70030
4 m (2 pcs)	95-70040



Doro cutter ESM 20

The Doro cutter ESM 20 is a front-mounted cutter with double-action Busati knives. In comparison to the single-action knives, the double-action knives are more efficient and have a higher cutting capacity. The ESM 20 is recommended when the water depth is less than 50 cm. A stone release system protects the knives from stopping when coming into contact with solid objects.

Working width:	2,1 m
Weight:	72 kg
Cutting depth:	0,5 m
Item no.	90-27900



Doro cutter ESM 30

The Doro cutter ESM 30 is a cutting unit for wetlands and subsoil water. The Double-action Busati knives have a larger opening. A direct-drive hydraulic motor with double-action knives, which increases the capacity so that even coarse plants and individual bushes of up to 15-20 mm can be cut. A stone release system provides overload protection when the knives stop against solid objects.

Working width:	2,15 m
Weight:	114 kg
Cutting depth:	0,3 m
Item no.	82-18300



Doro cutter ESM 40

The Doro cutter ESM 40 is mounted on the side of Truxor making it possible to cut along channels and canals. The angle of the cutting unit is adjustable. The knives are double-action Busati. The Doro Cutter ESM 40 is equipped with a stone release system that protects the knives when they encounter solid objects. The cutter has a hydraulic side arm with built-in adjustable extension for greater range.

Working width: 1.7m
Weight: 118 kg
Cutting depth: 0.5 m
Estimated sales start Q2 2020



Doro cutter ESM 50

The Doro cutter ESM 50 cuts and collects plants at the same time. It is recommended for smaller waterways such as golf ponds where space is scarce and the water flow can make collection difficult. When only the cutting function is to be used the collection net on the cutting bucket can be removed. The cutter is equipped with double-action Busati knives.

Working width: 2.1 m
Weight: 110 kg
Width: 2.25 m
Cutting depth: 0.8 m
Item no. 90-27800

Rakes



Reed rake

Used for the collection and transportation of plants after reed cutting. It has foldable side sections. The rake can be supplemented with strainer plates for collection of waste, algae and absorbents (oil spill clean-up).

Working width: 2 or 3.5 m.
Weight: 60 kg
Item no. 94-128100

Strainer plates

Reed rake accessory:
Weight: 13 kg
Working width: 2 or 3.5m
Item no. 94-29600



High-tip rake

This rake has a higher tip, which facilitates the loading of trailers or barges. The rake is made of perforated plating which allows it to collect smaller particles such as waste, algae and absorbents (oil spill clean-up).

Working width: 2,13 m
Weight: 70 kg
Max. lifting height in water: 1,3 m
Max. lifting height on land: 1,7 m.
Item no. 94-129400

Doro grip



The Doro grip is a flexible tool with a wide field of application for sediments, vegetation, tree, plastics, algae and similar debris. The Doro grip is especially recommended when working in shallow water and close to shore.

The Doro grip is a combined tool with grip bucket and grip rake that fits on the same attachment. With an adapter, the Doro grip can be mounted in Truxor's lift arm. The smaller grip rake and grip bucket can be mounted in the Doro digger with a special attachment.

The Doro grip can also be used with the telescopic extension. An increased working depth makes it possible to dredge and remove for example lilly roots.



78-33700



78-34500



78-34600



78-34700



78-34800

Item No.	Description	Weight	Volume	A. Working width B. Working depth
78-33700	Attachment	27 kg		
78-34500	Grip bucket	34 kg	145 L	A. 1000 mm
78-34600	Grip rake	28 kg		A. 1130 mm.
78-34700	Grip bucket	22 kg	65 L	A. 450 mm.
78-34800	Grip rake	14 kg		A. 490 mm.
78-34900	Adapter	8 kg		
94-129500	Telescope	33 kg		B. 1700 mm.
78-35000	Adapter T30, T40			
78-35600	Adapter T20			



78-35000, 35600



78-34900



94-129500

Doro miller



The Doro miller is used for restoring wetlands, and shore lines. The miller is available in different working widths. The miller heads are replaceable and can be dismantled from the drive unit.

The drive unit is mounted on the lifting arm. It is recommended only in wetlands with organic materials. The miller heads are not included.

Doro miller	
Operating unit	
Weight	38 kg
Engine speed:	0-150 RPM
Torque:	max 700 Nm
Length:	0,9 m
Item no.	72-14100
Miller heads set	
Working width:	1,2 m
Weight:	45 kg
Item no.	72-12300
Miller heads set	
Working width:	0,8 m
Weight:	32 kg
Item no.	72-12200
Knife mills set	
Working width:	0,8 m
Weight:	35 kg
Item no.	72-13600



72-12300



72-13600



72-12200

Wood chipper



The wood chipper rotor has two rotating knives. The rotor feeds the wood and air blows the material out via the adjustable exhaust. The wood chipper is hydraulically operated and is delivered with an adjustable bracket which facilitates the feeding process when working on slopes. The tool is an excellent supplement when clearing close to wetlands, lakes and waterways.

Wood Chipper

Weight:	198 kg
Capacity:	75 mm
Feed size:	500x400 mm
Item no.	94-104300

Doro digger



The Doro digger is an excavation aggregate and combined mounting system for other tools. The digging arm is made of high-tensile steel and has built-in brackets for attaching dredge hoses and additional hydraulic tubing.

The Doro digger is designed to maximise the lifting height, digging depth and reach. The digging aggregate has a swing system equipped with hydraulic cylinders that provide solid flywheel capacity. Doro digger is equipped with semi-automatic quick bracket DM X3 for fast tool change.

Examples of Doro digger accessories are excavation buckets, dredge pumps, flail mulchers and cutting knives.



Doro Digger with Doro Pump V3



Doro Digger with ESM 60

The Doro cutter ESM 60 effectively cuts vegetation and bushes on shorelines and in wetlands. The ESM 60 can cut most types of plants and bushes up to 25 mm in diameter. The knife beam has knives on both sides and the plants are cut from both directions by the swinging motion of the digging arm. The large working width reduces driving distances in wetlands and minimizes soil surface damage. The ESM 60 is not recommended for use under the water surface.

Doro digger

The maximum depth and reach have been measured from the water surface.

Maximum excavation depth:	3 m
Maximum lifting height:	2,9 m
Maximum reach (radius):	4 m
Maximum reach (diameter)	8 m
Maximum turning radius:	180°
Maximum depth for outrigger pontoons, stabilisation against the bottom (excavation):	1 m

If the water depth is less than 0.1 m, the outriggers can be removed. The machine will then be lighter and more flexible for use in wetlands, for example.

Buoyancy of outrigger pontoons	2 x 130 kg
--------------------------------	------------

Valve package equipped with two-lever system. Semi-automatic quick bracket DM X3.

Doro digger cannot be used at the same time as propeller (91-104200). Complete for mounting on T-serie machines. Excluding prop feet and buckets.

Doro Digger Item no.	77-25700
Total weight:	357 kg
Excavation aggregate :	226 kg
Outrigger pontoons :	131 kg
Prop feet front 2 pcs	77-25900
Prop feet rear 1 pcs	77-26000



Doro Digger with Orsi flail mulcher

Orsi flail mulcher. A perfect tool that chops vegetation without the need to collect it afterwards. It is recommended for plants and bushes with a diameter of up to 25 mm.

Doro digger accessories



The Doro miller when mounted on a Doro digger gives a large radius of action. The material can be easily processed and moved using the miller in order to fill uneven ground.

Recommended only in wetlands with organic material. The miller heads are not included.



Adapter bracket 72-14000



72-12200



72-13600

Doro miller

Drive unit:	
Weight:	31 kg
Engine speed:	0-150 RPM
Max. torque	max 700 Nm
Item no:	72-12100
Set of knife mills	
Working width:	0,8 m
Weight:	35 kg
Item no:	72-13600
Miller heads set	
Working width:	0,8 m
Weight:	32 kg
Item no:	72-12200
Adapter for mounting of Doro miller to the lifting arm	
Including hydraulic tubing.	
Weight:	5 kg
Item no:	72-14000

Accessories

Doro Digger buckets. Designed for work carried out in water. Made of high-tensile steel. The teeth of the buckets have cutting properties that facilitate excavation of root deposits which are common in water.

1. Bucket, 60 l, weight 37 kg **Item no. 77-16800**
2. Bucket, 30 l, weight 24 kg **Item no. 77-16900**
3. Excavator rake, 70 l, weight 27 kg **Item no. 77-17000**

Orsi flail mulcher.

Weight 88 kg, Working width 0.8 m.
Hydraulic operation. Delivered with a hammer knife.
Capacity: thicket of up to 25 mm.

Item no: 77-19000

Doro cutter ESM 60

Delivered with a knife for cutting grass and bushes with a diameter of up to 25 mm. Working width of knife is 1.9 m. Max reach when mounted on a Doro Digger (diameter): 11,5 m. Weight 88 kg,

Item no: 80-10000

Hydraulic tubing, including brackets, for operation of Doro pump V3, Orsi flail mulcher and Doro cutter ESM 60.

Item no: 77-20000



Doro pump V3



The Doro pump V3 when mounted on a Doro digger offers extensive control of the dredging accessories. The system has a rotating head and knives mounted on the intake, ensuring an even feed of material into the Doro pump.

The wings of the intake system feeds the sediment and minimises the dirtying of the water with the sediment.



Doro pump V3

Max. capacity:	130 m ³ /hour
Max capacity with lifting height:	
1 metre	120 m ³ /hour
2 metre	110 m ³ /hour
3 metre	100 m ³ /hour
The lifting height, hose length, type of sediment etc. all affect the maximum capacity.	
Maximum dredging depth with Doro Pump V3:	3.5 m
Max. permitted working width with Doro pump (diameter):	4 m (floating machine)
Max. permitted working width at a water depth of up to 40 cm: (diameter)	7 metre
Max depth, outrigger pontoons, stabilisation against the bottom (dredging):	2 m
Working width infeed:	400 mm
Doro pump V3 weight:	88 kg
Standard set weight:	86 kg
Doro Pump V3 incl. standard set.	Item no. 78-2503

Accessories

The discharge nozzle can pump sediments sideways when, for example, cleaning channels. It is delivered with replaceable nozzle to modify the sediment flow. Weight: 7 kg. Discharge nozzle **Item no. 77-25800**



Flat tubing 105 mm (50 m)	Item no. 78-105
Camlock, female	Item no. 78-5626102
Camlock, male	Item no. 78-5646102
Hose clip 110 mm	Item no. 01-110D20

Doro pump V3 standard set:

Delivered with hydraulically operated drill feed and 8 m spiral tubing including couplings, 25 m flat tubing Ø 105 mm incl. quick couplings and brackets for floaters, 10 floaters, 5 m flat tubing with quick coupling and end nozzle, 1 set of brackets for the dredging hose, outrigger pontoon extensions.

Doro pump



The Doro pump is a hydraulically operated dredge pump with a screw feeder that breaks off and feeds sediment into the pump intake. The Doro pump is easy to attach and changing to another tool takes only a few minutes. The Doro pump is delivered ready for assembly on the lifting arm.

The Doro pump can be delivered with the following accessories: hydraulically operated telescopic extension to increase the dredging depth and facilitate maneuvering.

Doro pump standard kit:

1 hydraulically operated feeding screw, 6 m spiral tubing incl. couplings, 25 m flat tubing Ø 105 mm with camlock quick coupling with buoyancy tube. 10 floaters, 5 m flat tubing with quick coupling and end nozzle, 1 suction nozzle, 1 DM attachment 0.9 m, 1 extension 0.7 m, 1 bracket set for dredging hose.



Suction dredging in pure sand is done using a suction tube which is mounted in the pump intake (the feeding screw is removed). The suction tube is included in the standard kit.

Doro pump

Doro pump with feeding screw:	
Weight:	94 kg
Dredging depth:	1,6 m
Working width:	0,8 m
The Doro pump is supplied with a standard kit.	
Standard set weight:	86 kg
Max. capacity:	130 m3/hour
Max capacity with lifting height:	
1 metre	120 m3/hour
2 metre	110 m3/hour
3 metre	100 m3/hour

The lifting height, hose length, type of sediment etc. all affect the maximum capacity. In order to ensure even sediment flow, knives are mounted on the intake of the pump.

Item no.	78-2502
----------	---------

Accessories

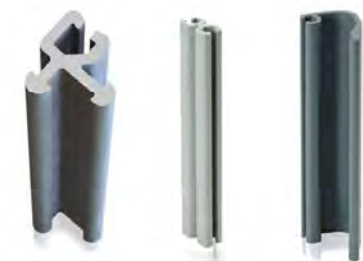
Telescopic extension Dredging depth: 2,4 m.	Item no. 94-129500
Flat tubing 105 mm (50 m)	Item no. 78-105
Camlock, female	Item no. 78-5626102
Camlock, male	Item no. 78-5646102
Hose clip 110 mm	Item no. 01-110D20

Pile driver DM 350



Pile driver DM 350 is a mast with a winch system for lifting and mounting plastic, wooden and metal piles and poles. It is equipped with a Hycon hydraulic hammer which is used in combination with the Pile driver DM 350 and generates very powerful vibrations, resulting in effective piling in water.

The Pile Driver DM 350 is mounted onto the frame bracket of the lifting arm. The X + Y movement is controlled from the operator's seat. The hydraulic hammer is attached to the winch using the bracket for piles or poles. Delivered complete with a winch. Hycon hydraulic hammer is not included.



Pile, u-profile	
Weight:	10,50 kg / m ²
Width:	310 mm
Material:	plastics, 5 mm
Length 2 m	Item no. 71-135820
Length 2,5 m	Item no. 71-135825
Length 3 m	Item no. 71-135830
Length 4 m	Item no. 71-135840
Trim corner 90°	Item no. 71-1300
Trim joint. Two-way	Item no. 71-1329
Trim joint. Three-way	Item no. 71-1536

Hycon hydraulic hammer accessories:

Mast extension 1 m, weight 7 kg.
Max pole/pile length 4 m
Item no. 71-10700K



U-profile pile bracket (71-1358) Weight: 12 kg	Item no. 71-14800
Round pole bracket, 60 mm	Item no. 71-4012575
Round pole bracket, 80 mm	Item no. 71-4012585



Pile driver DM 350

Length	4,5 m
Weight	63 kg
X movement:	max 1200 mm
Y movement:	max 1200 mm
Lifting capacity:	max 130 kg
Max pole/pile length	3 m
Item no	71-10600

Hycon hydraulic hammer



Hycon hydraulic hammer for piling of poles and plastic piles. The hydraulic hammer can be used with or without Pile driver DM 350.

Delivered with hydraulic hoses and quick couplings. The brackets for plastic piles and poles are ordered separately.

Weight: 34 kg.
Item no. 71-14500

Doro skimmer

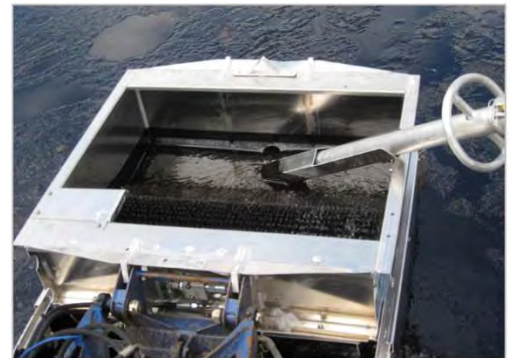


The Doro skimmer DS 800 is a mobile combi skimmer that works in shallow waters from approx. 2 cm. When an oil spill has been contained with oil booms, the booms can be mounted to the Doro skimmer's bracket. As a result, the machine does not have to drive in the oil spill. The end covers of the Doro skimmer can be removed, which increases the capacity when the oil is thicker.

Doro skimmer DS 800	Combined with Sala Roll Pump.
Capacity:	20 m ³ /h (thick oil)
Weight:	52 kg
Item no.	79-5000



The Doro skimmer is equipped with a bracket where the suction tubing (Sala roll pump) is placed.



The Doro skimmer can be used with or without Sala Roll Pump. The Doro skimmer holds approx. 20 litres.

Sala roll pump



The Sala roll pump is suitable for decontamination of thick-flowing and polluted matter in places that are difficult to reach. The suction tubing can be placed in the Doro skimmer or used manually.

The Sala roll pump can either suck or pump just by changing the rotation of the pump. This is useful for example, when the Doro tank is to be emptied. The strong vacuum ensures excellent suction capacity. The high pressure makes it possible to transport the matter over long distance.

The Sala roll pump can be used alone with a suction nozzle or in combination with Doro skimmer DS 800.



Capacity:	12 m ³ /h
Weight:	132 kg
Working pressure:	6 bar Max. pressure: 9 bar
Technical vacuum:	-0,95 bar
Estimated sales start Q2 2020	

Sala roll pump accessories:

Cleaning of oil spills: suction tubing, 4 m with suction hose 65 mm, 4 quick couplings Ø 65 mm, 2.25 m pressure hose 65 mm, 1 frame bracket. **Item no. 79-3002**
Flat tubing 3"/76 mm delivered in 50 m lengths

Item no. 78-11876

Camlock, female

Item no. 78-562676

Camlock, male

Item no. 78-564676

Hose clip 75 mm

Item no. 01-30474

Doro tank



The conditions for cleaning up oil spills vary depending on the environment. During the final phase of the work there are usually small areas of oil where it is practical to collect the oil in a mobile tank. The Doro tank is mounted between the pontoons and is supplied with couplings that can be easily mounted to the Sala roll pump.



When using the Sala roll pump to empty the tank it pumps out the oil via the suction tube. The Doro tank is used in combination with the Sala roll pump and Doro skimmer 800.

Volume: 200 l, Weight: 24 kg
Estimated sales start Q2 2020

Doro spreader



Oil-absorbing materials are easily spread with the Doro spreader DM 1000. The absorbents are spread on the oil spill to limit damages and making the oil easier to collect in water.

The rotating spreader head is controlled from the driver's seat and makes it easy to apply the suitable amount of absorbents. A central divider in the container makes it possible to use half the working width. The Doro spreader DM 1000 can be used with most types of absorbents.



Weight:	66 kg
Load volume:	1000 l
Max. load weight:	180 kg
L:	900 mm
W:	2000 mm
H:	800 mm
Item no.	79-15700

Accessories



Adapter

Adapting 5000 and 5045 tools for use on the T-series. Machine side X4 to tool side DM bracket.

Item no. 94-128400

Accessories



Tilt bracket

The tilt bracket mounted on the lifting arm facilitates the work and increases the precision of the tool when working sideways.

The tilt bracket makes it possible to angle the cutter and rake, thus cutting and collecting plants in places that are difficult to access. The tilt bracket can be adjusted by up to ± 30 degrees. Tools that can be combined with the tilt bracket: Doro cutter D20/ D30, ESM 20, ESM 50, Standard reed rake, Doro miller and Doro skimmer. The hydraulic tilt bracket is a Truxor T30 and T40 accessory.

Weight: 16 kg. **Estimated sales start Q1 2020**



Transport bed

If necessary, additional tools or accessories can be loaded on the machine with the help of the transport bed which is mounted on the transport bracket of the reed rake. Made of aluminium.

Weight: 4 kg. Max load: 60 kg. Volume: 70 l.

Size (LxWxH): 800x310x300 mm

Item no. 94-104500



Propeller operation

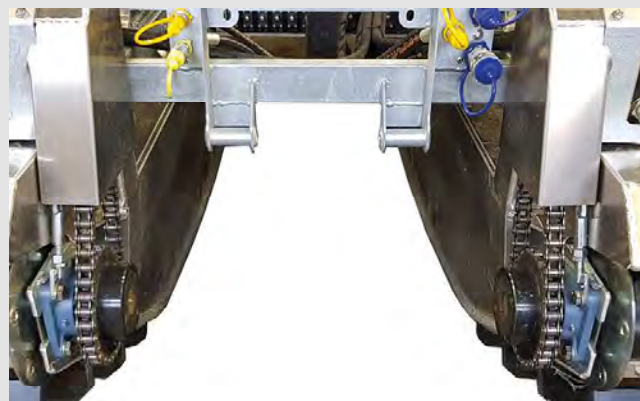
Increases the speed in water. Recommended for transport and in combination with certain tools. The propeller should not be used together with the reed cutter or Doro Digger. The engine speed of the propeller is controlled from the operator's seat. The propeller is controlled using caterpillar tracks. Delivered with a stone release system. A rear DM bracket must be installed (not included).

Speed in water, max. 7.8 km

Propeller diameter 330 mm.

Weight: 25 kg.

Estimated sales start Q1 2020



Sprocket set

Machines used in wetlands become more manoeuvrable if the gear speed is higher. The chain gear is recommended only when the machine is used in wetlands and in combination with the tools we recommend. With normal use in water, on land and in wetlands, it does not require higher gear speed. Drive chains and chain sprockets (bigger) are included.

Weight: 10 kg.

Item no. 94-104400

Trailer Variant



Trailer Variant

Loading platform dimensions:
5,2x2,1 m

Total length: 6,65 m

Service weight: 880 kg

Total weight: 2700 kg

Load capacity: 1820 kg

Loading platform height: 60 cm

Wheels: 195/50-13

Item no. 75-5200

The trailer Variant 2700U5 is a trailer specially adapted for transporting Truxor.

The trailer Variant 2700U5 is delivered with straps, collapsible sides of aluminium, hydraulic tipper, foldable rear ramp with gas springs that facilitate the raising and lowering of the ramp. Guide rails facilitate the loading and unloading of the machine.



Dorotea Mekaniska AB are specialised in lake cleaning, as well as maintenance of wetlands and waterways. Since 1990 we have been delivering, manufacturing and developing products, turning innovative thinking into reality. We offer everything from the small and simple reed cutter to the professional machine for reed cutting, dredging, oil spill clean-up, digging, piling etc.

Excellent quality and performance have always been our top priority and over time we have gathered experience and skills that we are happy to share with our customers.

The Dorotea factory, located in the north of Sweden, is the centre of production, spare parts and sales. We have customers and distributors all over the world. Spare parts for our products can be obtained from us or from our major distributors.



www.doroteamekaniska.se

The manufacturer reserves the right to make changes to the technical specifications and product range.

MANUFACTURING/SALES:



Dorotea Mekaniska AB
Östra Polarvägen 10
917 32 Dorotea
0942-258 80
www.doroteamekaniska.se

RETAILER:

Australian Catchment Management Pty Ltd
PO Box 79 Windsor NSW 2756
Phone: (02) 45 TRUXOR | Mobile: 0410 535 053
www.australiancatchmentmanagement.com.au
Email: sales@australiancatchmentmanagement.com.au